

Class Measurement Certificate

Revision 1.3 – Feb 2003

Boat Description	Sail No.	<input type="text"/>
	Name	<input type="text"/>
	Colour/s	<input type="text"/>
Owners Name	<input type="text"/>	
Address	<input type="text"/>	
		State
Sailing / Yacht Club	<input type="text"/>	
ACCA Measurer	<input type="text"/>	State
Date of Measuring / /	

I hereby certify that the described yacht above has been measured and found to conform to the rules and regulations imposed on Cobra 5m Catamaran chapters 1 to 19 as amended, and have indicated on this Certificate all the relevant measurements and Restrictions, Page 1 to 5.

ACCA Measurer,

Measurers Comments: -

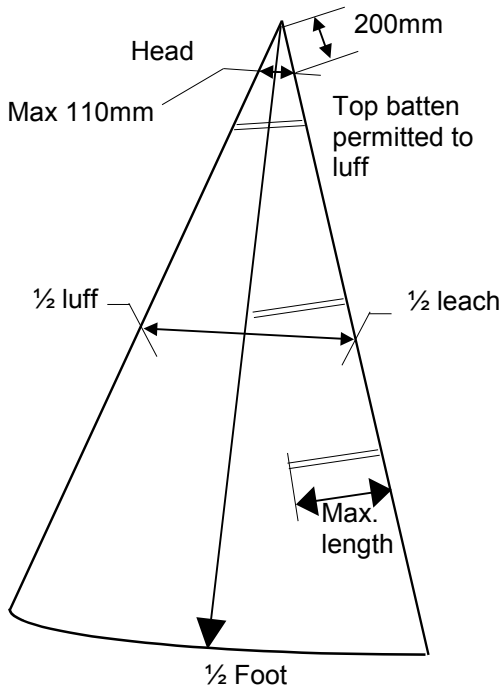
AUSTRALIAN COBRA CATAMARAN ASSOCIATION

Amendments to Measurement Certificate

RULE No.	AMENDMENT	MEASURER

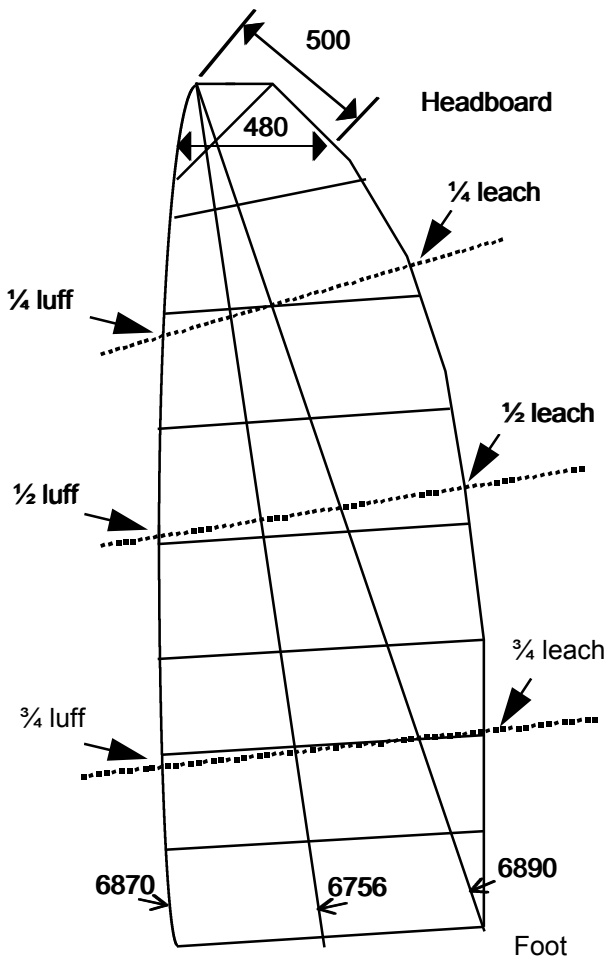
JIB

Sails: - Rules 14.1 to 14.7 and 15.1 to 15.17



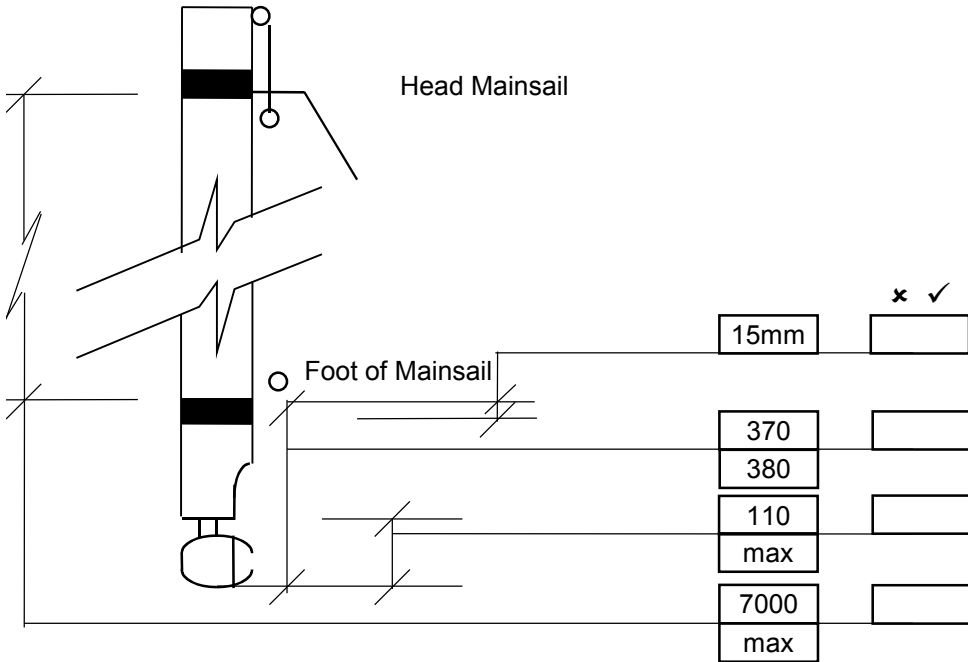
Luff Max	4120	
Leech Max	3820	
Foot Max	1690	
1/2 Leech to 1/2 Luff	850	
Head to mid point of foot max	3965	
200mm down leech to nearest luff	110	
Max number of battens	3	
Max length of battens	300	

MAINSAIL

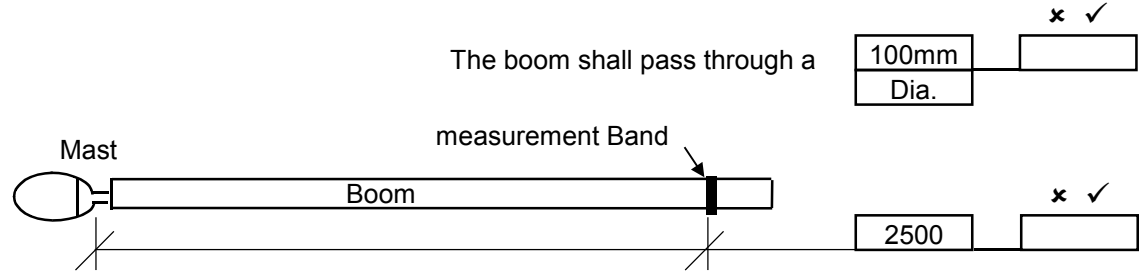


Max Head to mid point of foot	6756	
Max length of Luff	6870	
Max length of Leech	6890	
Max length of Foot	2440	
1/4 Luff to 1/4 Leech	1441	
1/2 Luff to 1/2 Leech	2139	
3/4 Luff to 3/4 Leech	2438	
500mm down Leech to nearest Luff	480	
Max size of Headboard	140	
Max number of battens (8) + 1 foot	9	
Max width of battens	55	
Max projection of battens from Leech	100	

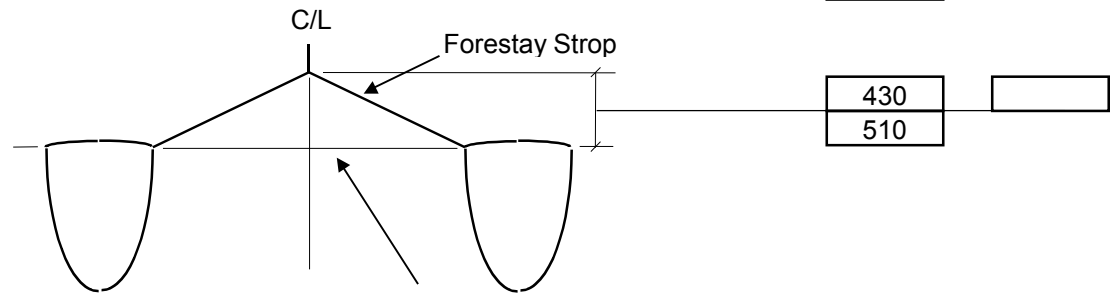
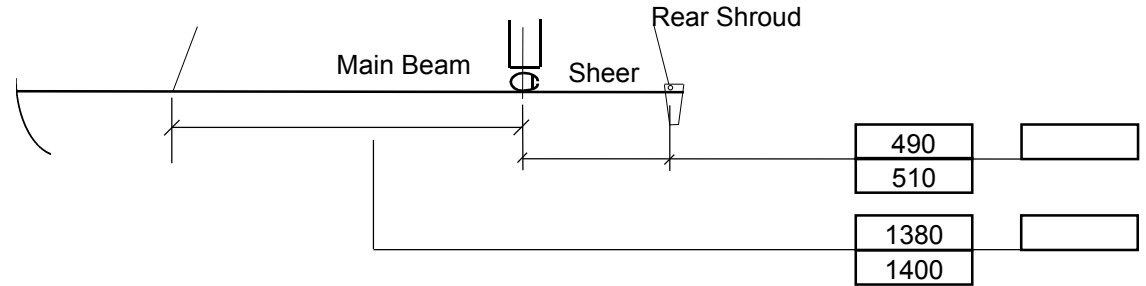
Mast 9.1 to 9.6



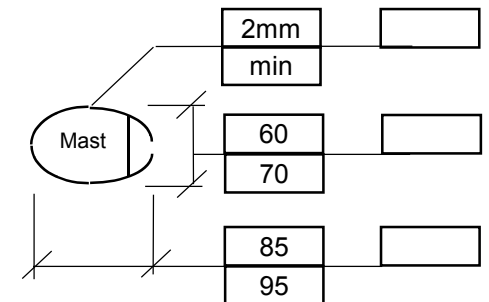
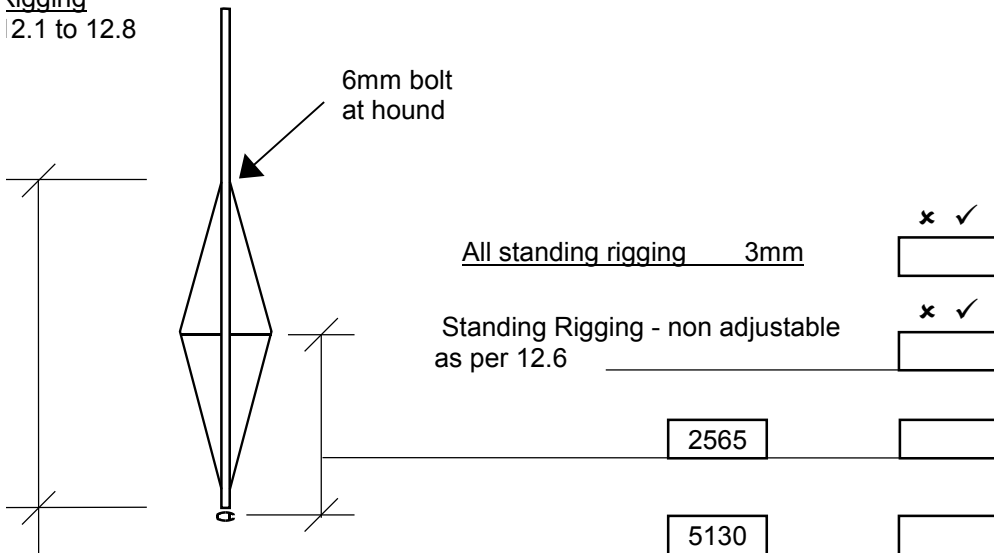
Boom Rules 10.1 to 10.3



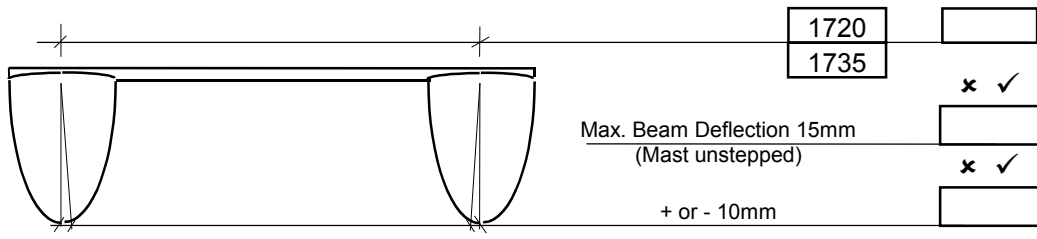
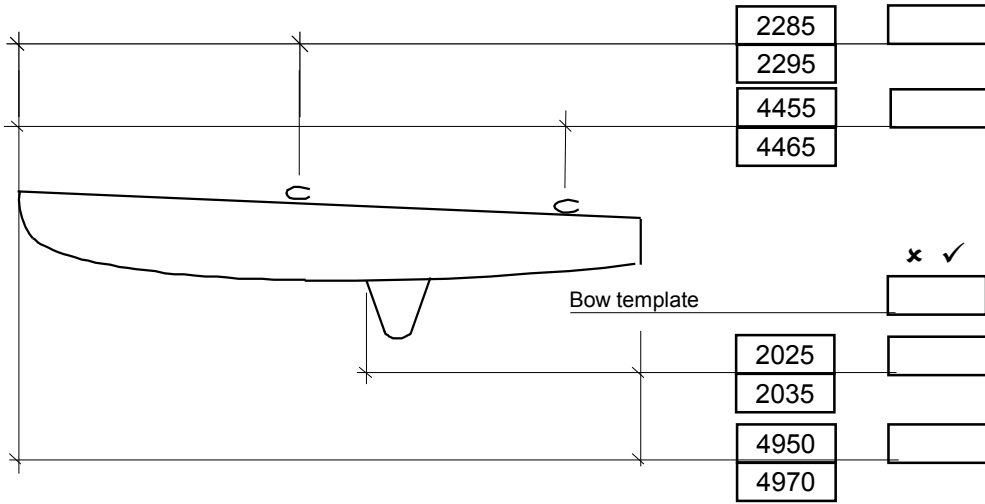
Standard Rigging. Rule 12.1



Rigging 2.1 to 12.8

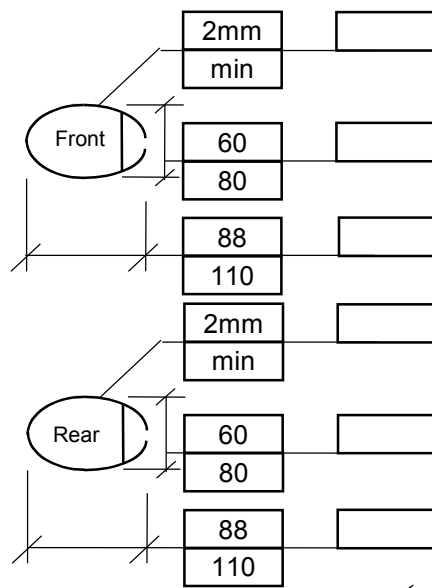


Beams - 4.1 to 4.11

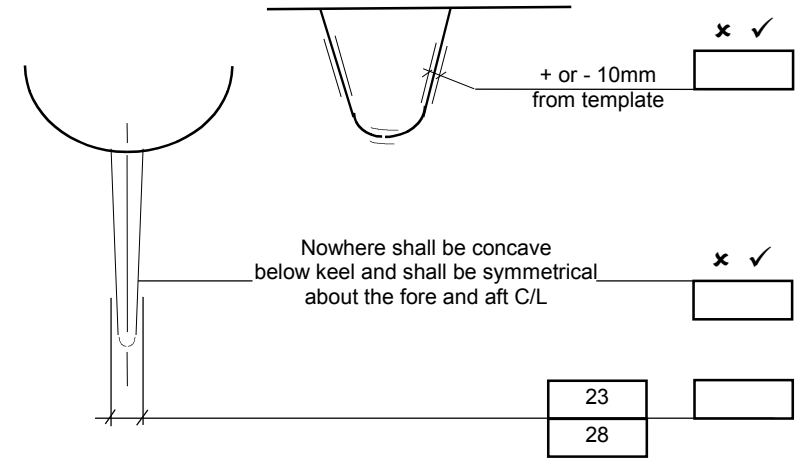


Max. Beam Deflection 15mm
(Mast unstepped)

+ or - 10mm



Beams parallel to Shear



Rudders Rule 7.1 Must be attached so as to retain them in the event of a capsize.

- Weight of hulls etc. Rules 8.1 to 8.5
- Dry hulls.
 - Beams and Tramp.
 - Main Traveller and Track.
 - Dry hulls.
 - All permanent fixtures bolted, screwed or otherwise permanently fixed to boat.
 - Weight corrector located in Main Beam
- Min Weight 77 Kg